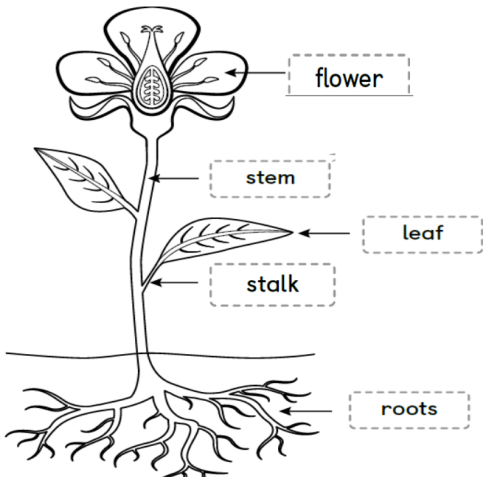
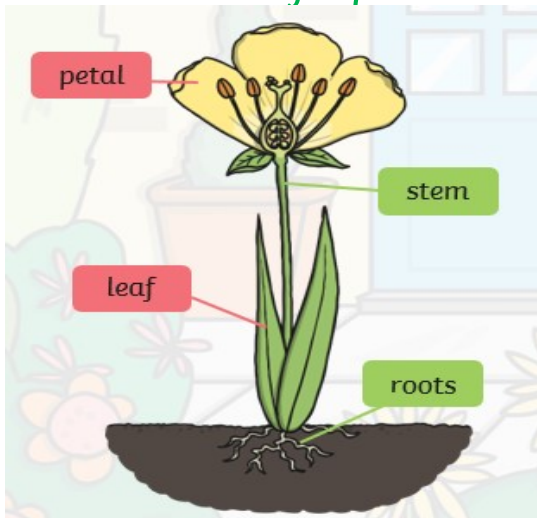


Prior learning

What do plants need to grow:

- air
- water
- warmth
- food

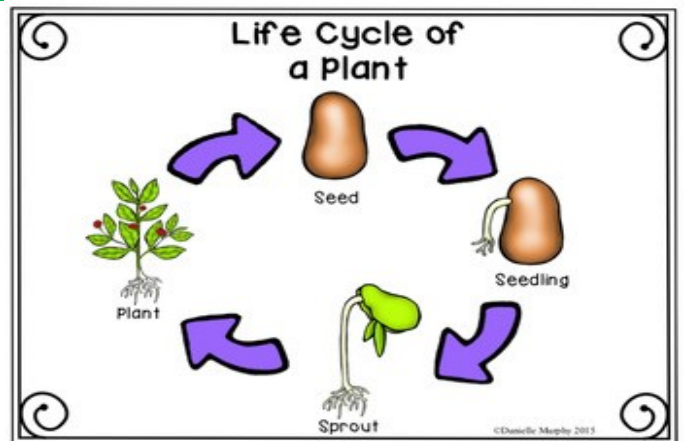
The structure of a plant



Key Vocabulary

New learning

A plant	A living thing that usually grows from the ground.	
The main parts of a plant	<ul style="list-style-type: none"> <li>• flowers</li> <li>• petals</li> <li>• leaves</li> <li>• stem</li> <li>• roots</li> </ul>	
Common plants to identify	Daffodils Daisies Roses Potatoes	
Common plants to identify in the Falkland Islands	Thrift Teaberries Sea Cabbage Boxwood	Scurvy Grass Wild Celery Balsam Bog Tussac



Part of the plant	Purpose
roots	Keep the plant in the ground and take in water from the soil.
stem	To support the plant and transport the water from the roots to the leaves.
stalk	To connect the leaves to the stem.
leaves	To collect sunlight and make food for the plant.
flower	To be bright and colourful to attract insects and birds which spread pollen.